

LANIER

U411

WIDE FORMAT



Enhanced performance, user-friendly operation

*A fast, cost-effective wide format multifunction product
with built-in digital copying, plus optional network printing
and advanced scanning*



A new source of productivity for your organization

With the Lanier LW411 Wide Format Digital Imaging System, outsourcing your wide format printing or doing it in-house on pen plotters or in dedicated repro areas is obsolete. Printing high-quality wide format documents is now simple and affordable for even small organizations.

Accessible, intuitive, easy

The Lanier LW411 was designed to be used by untrained operators who need their work now. It is simple and intuitive to operate, so virtually anyone in your organization can successfully use it on the first try.

- No reaching: Paper drawers, toner and all controls are accessible from the front and easy to reach.
- No confusion over the control panel: Back-lit touch-screen control panel and the hierarchical tool menus were engineered to make operation easy.
- No trouble changing rolls: Changing paper is one of those tasks that everyone tries to avoid. On the Lanier LW411, changing rolls is quick and easy. There's also a standard two-roll paper tray to double the time between paper changes. And you can add another two-roll drawer—or two cassette trays for cut-sheets to further minimize paper changes.

Copy and store

Managing a constant stream of revisions and additions is a challenge for any organization producing wide format documents—a situation that's greatly simplified by having easy access to your originals. The Lanier LW411 features its own internal document server. Able to store up to 80 GB's of data for up to 180 days, the document server provides instant accessibility for your works in progress. There are no originals to search for and no valuable office space needed for document storage. You can also edit, reduce, enlarge or stamp your documents before you store or retrieve them for reprinting. And security is password protected to keep unauthorized users out.

System management from your desktop

Keep your Lanier LW411 in complete readiness with as little effort as possible. In fact, you can monitor the system over the Web from any networked PC. Check the status of a variety of key features, including general system status, paper and toner levels, job log and address book. You can also assign security levels, define configurations and view and save thumbnails. Result: you can maintain system readiness without being physically at the system.





Designed to be used by untrained operators, the Lanier LW411 is a breeze to operate—virtually anyone can successfully use it on the first try.

Embedded Scanner Option

Scans originals to e-mail or folders within a networked PC or server. Access scans via intranet or Internet, PC-to/from-PC or PC to/from server.

Hardcopy Originals Scanned by the Lanier LW411



Lanier LW411

Network PC Accesses scans via Intranet



Document distribution in an instant

Is it possible to dramatically cut costs and improve service at the same time? With the embedded scanner on the Lanier LW411 the answer is “yes.”

- Scan and distribute your documents anywhere almost instantly with the Lanier LW411's Scan-to-Email capability. Streamline document sharing even further with “LDAP search,” which lets you download unlimited recipient names directly from your e-mail or corporate address book.
- Scan directly to a folder on the built-in hard disk with the Scan-to-Folder feature, simplifying document storage and making retrieval as easy as a keystroke. Designated users on your LAN or WAN now have the same easy access to review and update your work as you do.
- Convert your blueprints into high-resolution, black-on-white output by simply selecting “diao” when you scan your old-style prints. The network TWAIN scanning driver easily solves the problem of bringing your legacy documents into your digital document mainstream.

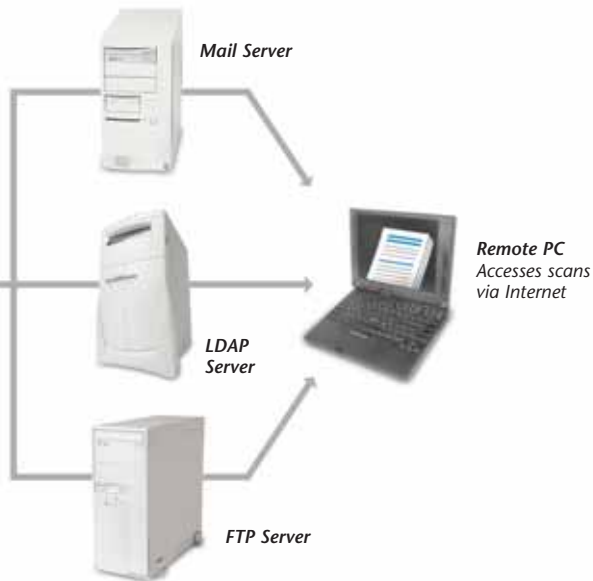
Precision images

The Lanier LW411 also has a special “drawing” category in its list of menu types. This designation allows even greater technical processing of fine lines in your copies.

Add the power of the RW-480 Controller

The optional RW-480 Controller with its PLOTBASE and PLOTCLIENT software further extends the power and capabilities of the Lanier LW411:

- Print and scan documents up to 49 feet long.
- Eliminate the need to print on slow, costly inkjet plotters.



- Prioritize print jobs automatically from multiple users across your organization.
- Scan-to-DWF format and print DWF documents without having to use AutoCAD.
- Offer your clients the convenience of transmitting print jobs over the Internet.

Add the SCANTOOL option and you can:

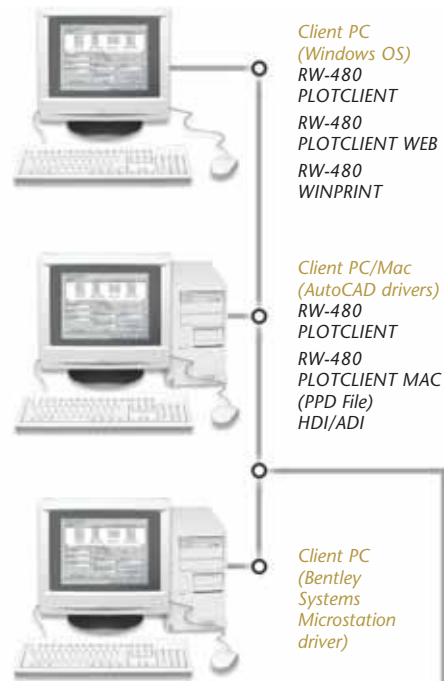
- Scan-to-File for archiving, editing images, merging images or creating sets or multi-page documents.
- Scan-to-PDF with the Postscript™ option.
- Scan-to-DWF with the DWG/DXF/DWF option.

Security you can trust

At Lanier, we know that security has become a primary concern at organizations everywhere and have integrated sophisticated technologies to protect your work:



- Windows Authentication ensures that only authorized personnel can access your files. Users must input their names and passwords before they can access the machine.
- Data Encryption prevents attempts to intercept data during transmission by encrypting your data until it's printed out.
- Data Overwrite System automatically overwrites any "latent images" left on the system hard drive after a job is completed, making efforts to access and reconstruct residual image data virtually impossible.



Client PC
(Windows OS)
RW-480
PLOTCLIENT
RW-480
PLOTCLIENT WEB
RW-480
WINPRINT

Client PC/Mac
(AutoCAD drivers)
RW-480
PLOTCLIENT
RW-480
PLOTCLIENT MAC
(PPD File)
HDI/ADI

Client PC
(Bentley
Systems
Microstation
driver)

Server PC
(Windows 2000
or Windows XP)
RW-480
PLOTBASE
RW-480
PLOTCLIENT
WEB ADMIN
RW-480
SCANTOOL

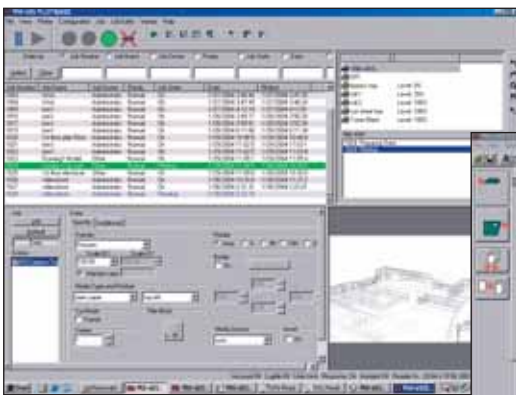


RW-480 Print
Controller for
fully functional
network printing

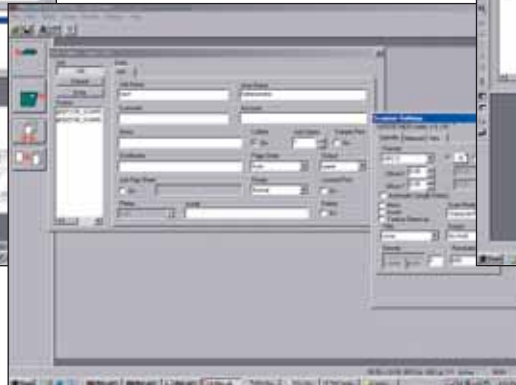
Your Environmental Partner



Lanier continues its long-standing commitment to developing office solutions with environmentally friendly and superior energy- and supply-saving features, without compromising productivity.



PLOTBASE: Manages the print queue.



PLOTCLIENT: Interface to create and send print jobs.

PLOTBASE and PLOTCLIENT software further extends the power and capabilities of the Lanier LW411.

SPECIFICATIONS

COPIER SPECIFICATIONS

Configuration	Console
Copying/Printing Process	Electrophotographic Printing
Paper Source	Two (2) Rolls
Optional	Paper Cassette Trays (2) Two-Roll Paper Drawer
Warm-up Time	Less than 2 minutes
First Copy	25 seconds (E size)
Copying Speed	8 cpm/ppm (D size); 4.5 cpm/ppm (E size), 3.93 ips
Resolution	600 dpi x 600 dpi
Gray Scales	256 levels
Gray Scale Printing	2 levels
Reduction/Enlargement	16 presets: Zoom 25% to 200% in 0.1% increments; 200% to 400% in 0.2% increments
Multiple Copies	1-99
Cutting Method	Synchronized cut, preset cut, variable cut
Standard Memory	1 GB
Standard Hard Drive	80 GB
Standard	Interface to external PC for RW-480 Controller
Original/Copy Size	Maximum: 36" x 590" (49'); Minimum: 8.5" x 7"; 36" x 78" bypass
Original Exits	Top, Top Rear Curled, Rear Straight Path
Copy Exits	Front: Capacity 99 D sheets paper; Rear: 10 E Sheets
Power Source	120V/60Hz; 20A
Dimensions	50" x 30" x 47"
Weight	507 lb.

COPIER FEATURES

Auto Magnification Selection
Auto Paper Selection
Backlit Touch-Screen Control Panel
Combine Originals: 2 in 1, 4 in 1, 8 in 1
Document Server: Stores up to 375 D size documents
Editing Capabilities: Erase, Format Overlay, Image Shift,
Margin Adjustment, Mirroring, Negative/Positive, Partial Copy
Emergency Stop; Interrupt Mode
Job Program (10 Jobs)
Original Types: Background Line, Drawing, Generation,
Pasted Original, Text/Photo
Proof Copy
Stamp: Preset (8), Custom (4), Page, Date

COPIER OPTIONS

Embedded Scanner	Scan-to-Email & Folder, Network TWAIN, Security
Original Catch Tray	37" (w) x 31" (d) x 44" (h); 30 sheets, 25 lb.
Paper Cassette Unit	Paper Size Max. 24" (w) x 18" (l), Cap. 250 Sheets, 132 lb.
Roll Feeder	Optional 2nd Drawer holding 2 rolls, 36" up to 590"
Roll Holders	Two Rolls, 36" x 590" (49'), Max. Roll Diameter 6.88"

RW-480 Controller & Options (see below)

PRINTER CONTROLLER RW-480 (OPTION)

PC Server Specifications	
Controller Type	External PC Server (Note: Server not included, must be purchased separately from an appropriate vendor)
PC System Requirements	
Operating System	Windows® 2000 Professional SP3 or Windows® XP Professional SP1
Processor	Pentium® 4 or higher, 1GHz
PCI Interface Slot	2.0 or higher x 1 slot (with 3.3 V or 5V auto adaptive max. load 5V)
RAM Memory	Min. 2G for 49' printing/scanning, Min. 512 MB for <=19.5' printing/scanning
Hard Drive	At least 10 GB memory
Network Interface	10/100 Base T Ethernet, TC/IP configuration
Monitor	At least 1024 x 768 pixels resolution
Network Protocol	TCP/IP, IPX/SPX, lpr/lpq, HTML, SMB, Ether Talk

Print Controller	
Maximum Speed	8 ppm (D-size documents)
Supported Output File Formats	HP-GL, HP-GL2, HP-RTL, TIFF, Calcomp 906/907, WMF, BMP, CALS, T6X, CIT, PCX.
Unix Support	Redhat Linux 6.x-7.1; HP-UX 10.x/ 11.x; Sun Solaris 2.67. x/8.x; SCO Open Server 5.x (up to 5.06)
Mac Support	From Mac® OS 8.6 – Mac OS X 10.3
Options	Adobe®PostScript® 3™ (for PDF printing and scanning); DWG/DXF/DWF CGM

PRINT CONTROLLER FEATURES

Account Tracking	Mirror Image
Auto Paper Select	Multiple Print Sets
Border Setting	On-line Help
Collation	Output Tray Select
Combine Images	Pen Settings/Stamping
Device Status Monitor	Print Queue Management
Image Rotation	Print-to-Document Server
Limitless Paper	Print/Scan up to 49'
Locked Print	Remote Print via Internet
Magnification	Roll/Media Select
Media Selection	Sample Print

SCANNER RW-480 (OPTION)

Controller Type	External PC Server (Same as for Print Controller)
Maximum Speed	8ppm (D size)
Resolution	150-1200 dpi
Scan Size	8.5" x 11" – 35.98" x 590"
File Formats	TIFF Single and Multi Page (uncompressed/G3/G4), T6X, BMP, RLC, HP-RTL, PCX, CALS 1 & 2, Optional PDF (Single and Multi-Page), Optional DWF
Reading Area Setting	Auto, Fixed, User Defined
Continuous Input	Batch Scanning, Scan-to-File with Autoname, Save Multiple Page Document in One File (PDF or TIFF)
Scanning Modes	Single Copy, Set Copy, Batch Scanning, Archiving, Integrated Editor
Scanner Software	SCANTOOL

CONTROLLER OPTIONS

RW-480 Controller
Scan Option
DWG/DXF/DWF Option (Print w/o AutoCAD; Scan-to-DWF
w/Scan Option)
Postscript 3 (Emulation) Option
CGM (Computer Graphics Metafile) Option

